

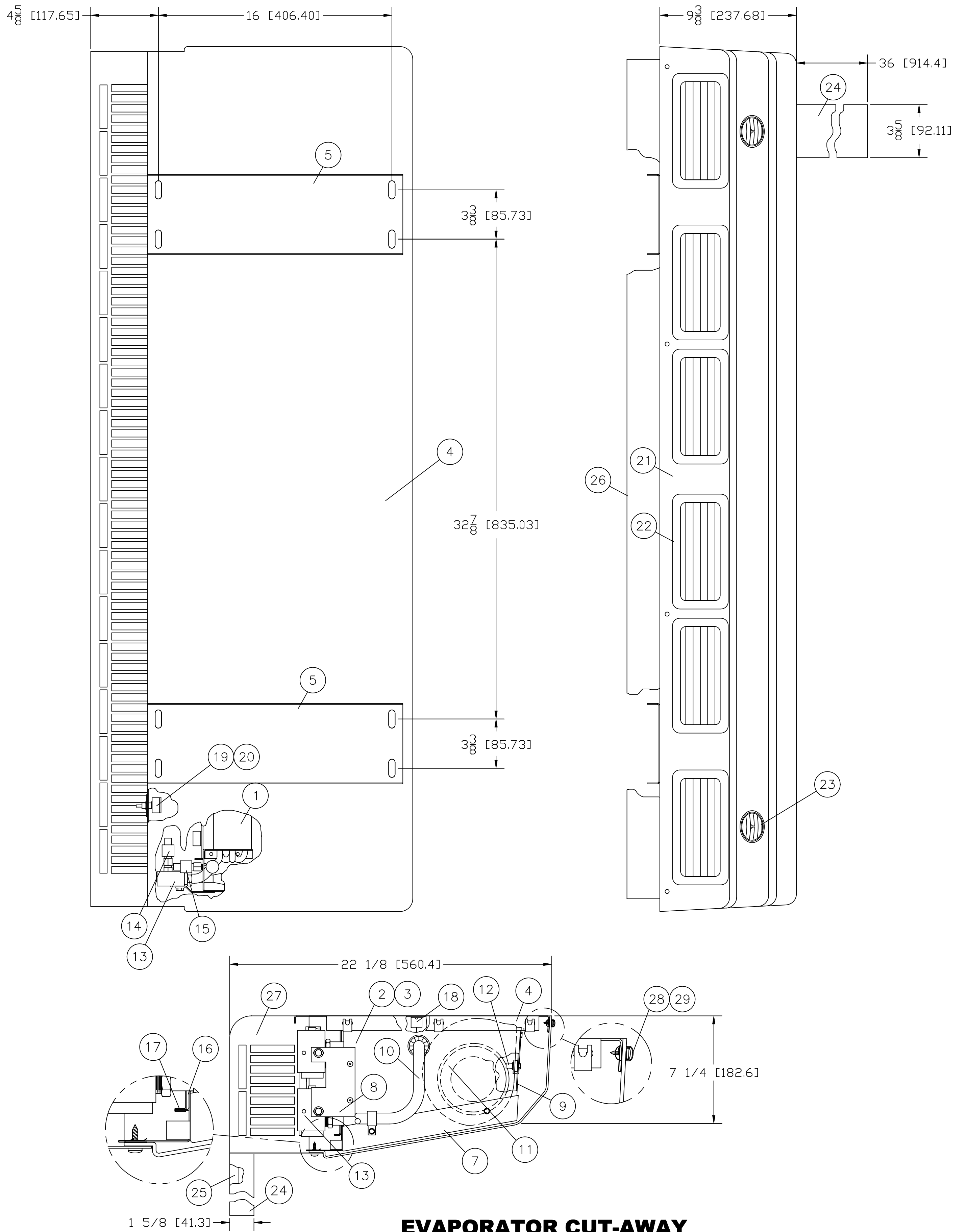
10/18/04

EZ-9 EVAPORATOR

ITEM	PART NUM	DESCRIPTION	QTY
1	EZC-003	COIL, ASSEMBLY, EZ-9 EVAP (W/ EXPANSION VALVE)	1
2	210-003	SIDE, RIGHT EVAP	1
3	210-036	SIDE, LEFT, EZ-9 EVAP	1
4	210-017	TOP PLATE, EZ-9 EVAP	1
5	210-034	SUPPORT, TOP PLATE, EZ-9 EVAP	1
6	210-038	SUPPORT, DRAIN PAN, EZ-9 EVAP (NOT SHOWN)	1
7	200-202	DRAIN PAN ASSY, EZ-9 EVAP	1
8	210-039	BRACKET, EXPANSION VALVE, EZ-9 EVAP	1
9	210-018-BK	BLOWER PLATE, BLACK, EZ-9 EVAP	1
10	200-004	WIRING HARNESS ASSY, EZ-9 EVAP	1
11	BLW-206P	BLOWER ASSY, EVAPORATOR W/ #10-32 THREAD	3
		INSERT	
12	WLN1032	NUT, WELL, #10-32	15
13	EXP-002	EXPANSION VALVE, BLOCK 5/8 SUCTION W/H/S PRES	2
		PORT, 134A	
14	HPS-504-P	PRESSURE SWITCH, HIGH, 300-200 PSI	2
15	LPS-101-P	PRESSURE SWITCH, LOW, 30-10 PSI	2
16	FTR-011	FILTER, RETURN AIR EZ-9	2
17	TCU-003	CLIP, TINNEMAN, FILTER	4
18	RES-400	RESISTOR, 1.8 OHM SURGE 4 PRONG	3
19	SWC-301	THERMOSTAT, ROTARY CONTROL	1
20	210-055	BRACKET, THERMOSTAT MOUNT	1
21	200-200-W	COVER ASSEMBLY, WHITE EZ-9 EVAP	1
22	200-064	OUTLET AIR BEZEL, FIXED	6
	200-023	OUTLET AIR BEZEL, ADJUSTABLE (NOT SHOWN)	6
23	200-009	LOUVER, 2" DIA W/ SPRING CLIP	2
24	210-056-W	HOSE COVER, WHITE, 36	2
25	210-011	HOSE COVER, BACK, 36	2
26	210-058-W	TRIM STRIP, WHITE, EZ-9 EVAP	1
27	210-020-BK	GRILL, AIR INLET, BLACK, EZ-9 EVAP	1
28	CAP001W	SNAP CAP, WHITE	10
29	WAP001	WASHER, SNAP CAP	10
30	200-048-W	MOUNTING CHANNEL, HEAVY DUTY, EZ-9 EVAP (34 LG.)	2
		WHITE (NOT SHOWN)	
31	580-042	FUSE, TYPE MDL, 15 AMPS, 32 VOLTS	3
		1/4 DIA X 1 1/4 LG (NOT SHOWN)	

10/18/04

EZ-9 EVAPORATOR



EVAPORATOR CUT-AWAY